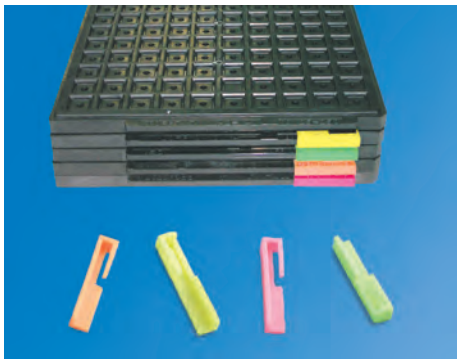


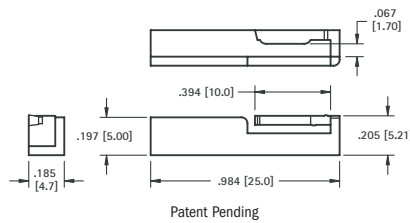
ANTI-STATIC IC TRAY CLIP



- The Anti-Static IC tray clip is designed to perfectly fit into a JEDEC tray. It is flexible and may be clipped securely into IC tray tab.

SPECIFICATIONS

Material: PBT and Polyether
Surface Resistance: $\leq 1 \times 10^{12} \Omega$
Operating Temperature: 300°F (150°C) Max.



CAT. NO.	COLOR
8896	YELLOW
8897	ORANGE
8898	PINK
8899	GREEN

The unique color coded Anti-Static IC Tray Clip, is a patent pending design and can be used for the following applications:

MSD (Moisture Sensitive Device) re-baking process

The current method of identification of unpacked moisture sensitive devices (MSDs) during the re-baking process, is typically done manually by pasting papers on IC trays with written information such as date and time of unpacking. Since this information is important for maintaining MSDs performance, once manually noted baking trays are put into an oven for re-baking, it is hard to identify individual trays to determine which one should be removed first. With the Anti-Static Clip, this process is made easy, thanks to unique color coding.

Identification for IC production line

There are several ways to identify ICs at the manufacturing level. For example, drawing a line on an IC tray with a marker is common. However, with this done an IC tray with a drawn line cannot be re-used for other purposes. Now with the color coded Anti-Static IC Tray Clip, operators can sort and reuse IC trays for various purposes with ease.

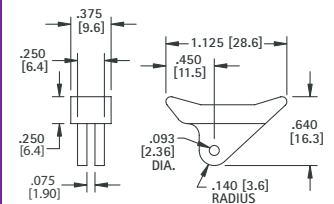
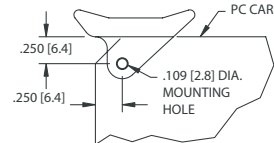
LEVER ACTION PC CARD EJECTORS



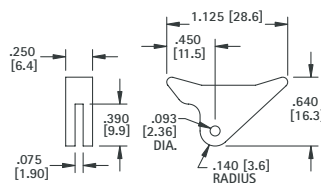
Designed for .062 (1.57) thick PC cards. Level action ejectors aids card insertion and extraction. Supplied complete with stainless steel spring pin.

MATERIAL:
White Nylon 6/6, UL Rated 94V-2

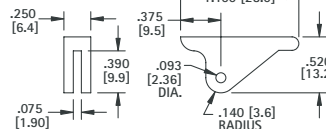
CARD MOUNTING DIMENSIONS



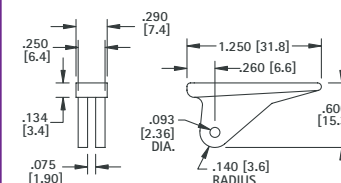
CAT. NO. 8640



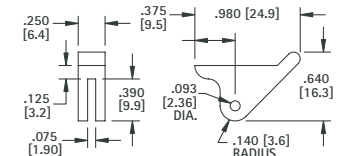
CAT. NO. 8641



CAT. NO. 8642



CAT. NO. 8643

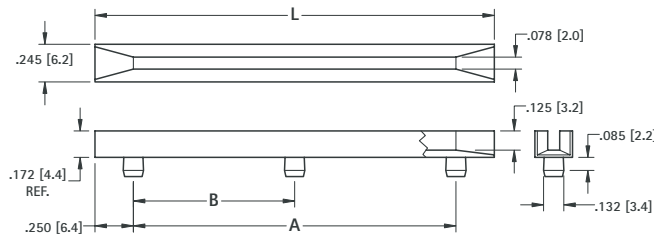


CAT. NO. 8644

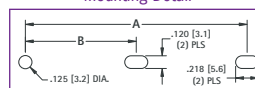
PC BOARD GUIDES



Guides may be used horizontally or vertically and snap into .125 (3.2) diameter holes. Narrow width allows maximum density and optimum airflow. Simple press-fit, secure installation.



Mounting Detail



MATERIAL:
Natural Nylon 6/6, UL Rated 94V-2

CAT. NO.	L	A	B
8620	2.5 (63.5)	2.0 (50.8)	-
8621	3.0 (76.2)	2.5 (63.5)	-
8622	3.5 (88.9)	3.0 (76.2)	-
8623	4.0 (101.6)	3.5 (88.9)	-
8624	4.5 (114.3)	4.0 (101.6)	-
8625	5.5 (139.7)	4.5 (114.3)	-
8626	6.0 (152.4)	5.0 (127.0)	-
8627	6.0 (152.4)	5.5 (139.7)	-
8628	6.5 (165.1)	6.0 (152.4)	-
8629	7.0 (177.8)	6.5 (165.1)	-
8630	7.0 (177.8)	6.5 (165.1)	3.25 (82.6)
8631	7.5 (190.5)	7.0 (177.8)	-
8632	7.5 (190.5)	7.0 (177.8)	3.50 (88.9)
8633	8.0 (203.2)	7.5 (190.5)	-
8634	8.0 (203.2)	7.5 (190.5)	3.75 (95.3)
8635	8.5 (215.9)	8.0 (203.2)	-
8636	8.5 (215.9)	8.0 (203.2)	4.00 (101.6)